



KNELSON GRAVITY SOLUTIONS

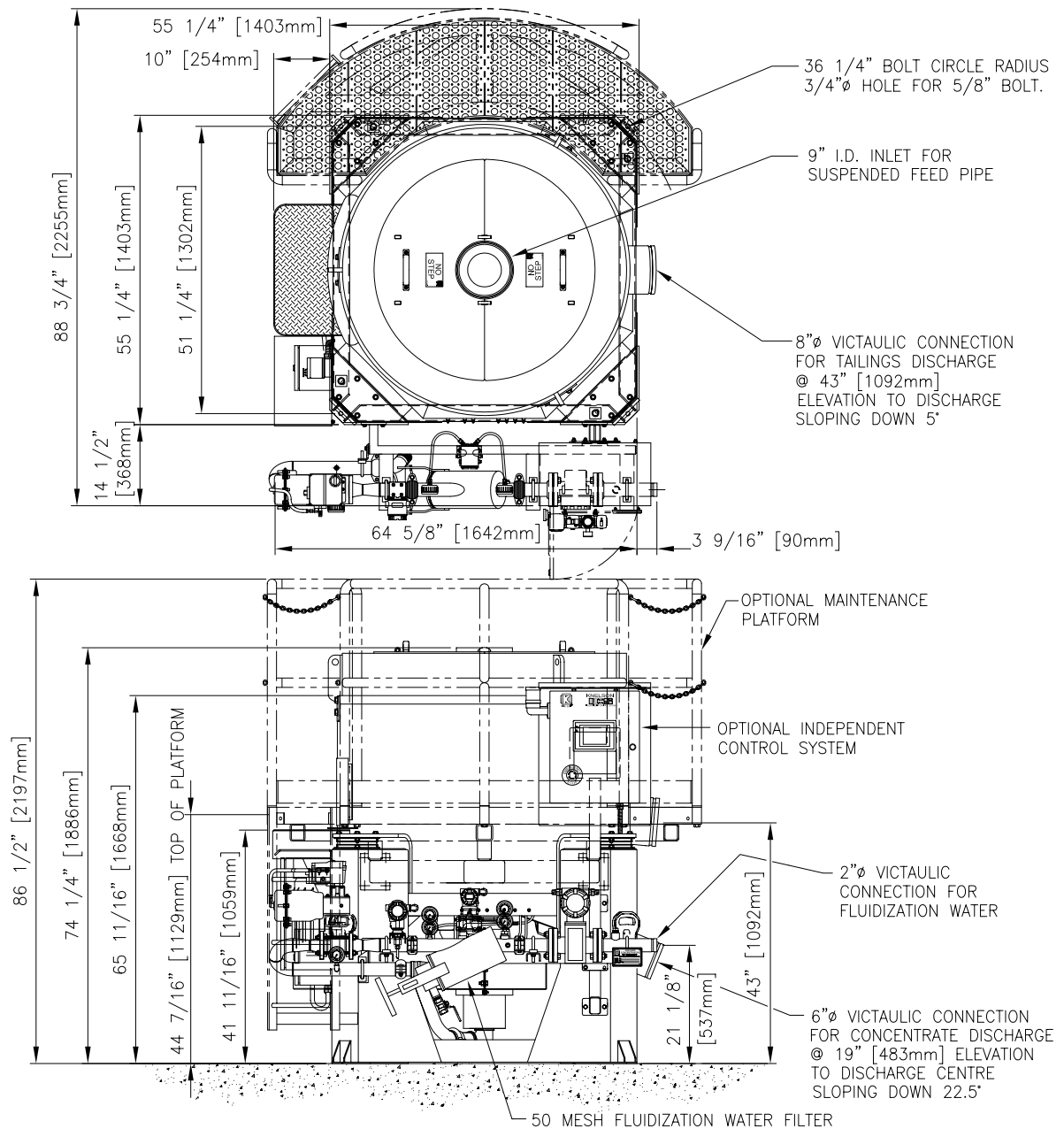
(A division of Knelson, a corporate partnership)
 19855-98 Avenue, Langley B.C. Canada, V1M 2X5
 Phone: (604)888-4015, Fax: (604)888-4013
 www.knelsongravitysolutions.com, e-Mail: knelson@knelson.com

DATE: APR 27, 2010

DWG. No. A01393K4

KNELSON CONCENTRATOR MODEL KC-XD30 SPECIFICATION SHEET

FEED CAPACITY (MAY VARY DEPENDING ON MATERIAL)	- 83 - 165 tons/hr [75-150 tonnes/hr] SOLIDS
TYPICAL FLUIDIZATION WATER REQUIREMENT	- 75 - 110 USgpm [17 - 25 m ³ /hr]
MINIMUM AIRFLOW REQUIRED (AUTO PIPING ONLY)	- 3 ft ³ /min [5.1 m ³ /hr]
FEED DENSITY	- 0 - 75% SOLIDS/WEIGHT
MAXIMUM TOTAL VOLUMETRIC THROUGHPUT	- 900 USgpm [205 m ³ /hr]
FEED SIZE	- MAX: 1/4" [6mm]; RECOMMENDED: MINUS 10 MESH [1.7mm]
TYPICAL CONCENTRATION CYCLE DURATION	- HARD ROCK: 1/2 - 4 HOURS [PLACER: 4 - 12 HOURS]
TYPICAL FLUSH CYCLE DURATION	- 1 - 2 MINUTES
CONCENTRATE VOLUME	- 780 in ³ [13 L]
CONCENTRATE WEIGHT	- 45 - 60 lb [20 - 27 kg]
CONCENTRATOR NET WEIGHT	- 3800 lbs [1724 kg] (NOT INCLUDING PIPING)
H.P.	- 15 (ELECTRIC) [11 kW]
APPROXIMATE SHIPPING WEIGHT	- 3940 lbs [1790 kg]
APPROXIMATE SHIPPING WEIGHT WITH SPARES	- 4230 lbs [1918 kg]
APPROXIMATE CRATED SHIPPING DIMENSIONS	- LENGTH 204cm x WIDTH 209cm x HEIGHT 204cm

**NOTE:**

- SPECIFICATIONS SUBJECT TO CHANGE WITHOUT NOTICE.
- ALL PIPING TO CONCENTRATOR TO BE FLEXIBLE TO ALLOW FOR SLIGHT OSCILLATION OF UNIT DURING OPERATION.
- MACHINE SHOWN WITH OPTIONAL AUTOMATED PIPING, MANUAL PIPING ALSO AVAILABLE