



# KNELSON GRAVITY SOLUTIONS

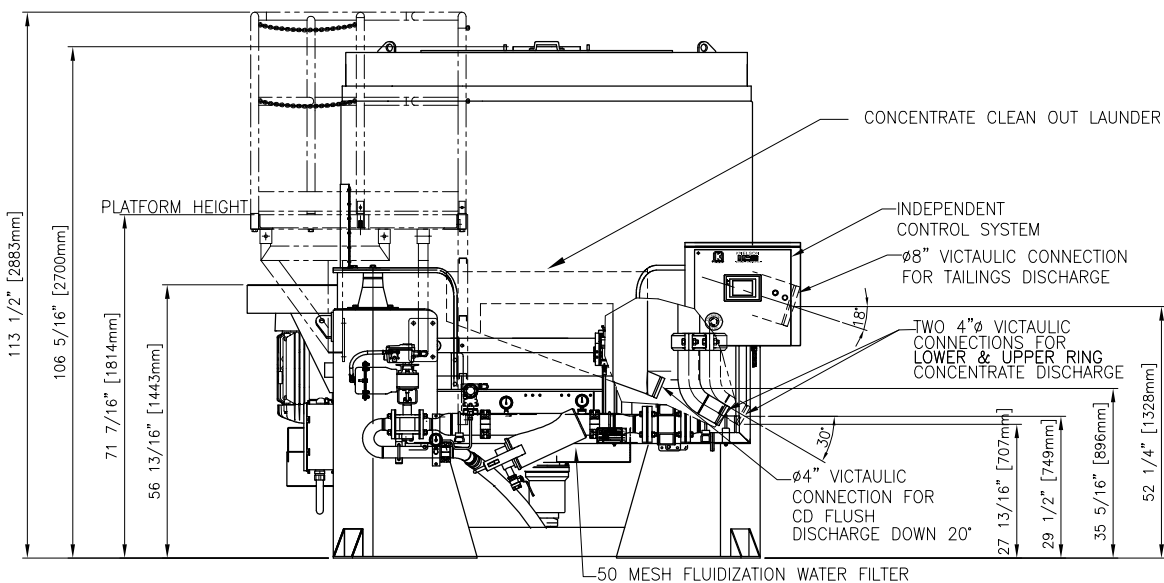
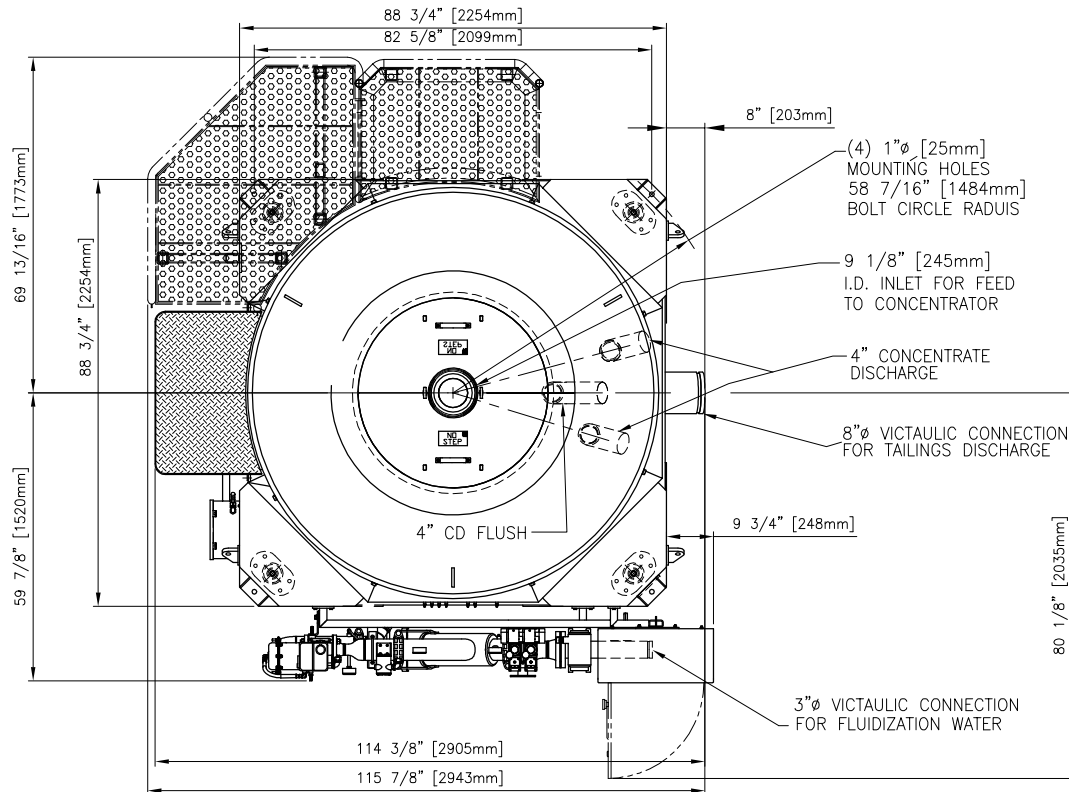
(A division of Knelson, a corporate partnership)  
 19855-98 Avenue, Langley B.C. Canada, V1M 2X5  
 Phone: (604)888-4015, Fax: (604)888-4013  
 www.knelsongravitysolutions.com, e-Mail: knelson@knelson.com

DATE: SEPT 24, 2008

DWG. No. A02003H1

## KNELSON CONCENTRATOR MODEL KC-CVD32 (2 RINGS) SPECIFICATION SHEET

- FEED CAPACITY (MAY VARY DEPENDING ON MATERIAL) - 33 - 88 tons/hr [30 - 80 tonne/hr] SOLIDS  
 TYPICAL FLUIDIZATION WATER REQUIREMENT - 70 - 150 USgpm [16 - 34 m<sup>3</sup>/hr]  
 MINIMUM AIRFLOW REQUIRED - 11.0ft<sup>3</sup>/min (18.7m<sup>3</sup>/hr)  
 FEED DENSITY - 0 - 50% SOLIDS/WEIGHT  
 MAX TOTAL VOLUMETRIC THROUGHPUT - 750 USgpm [170 m<sup>3</sup>/hr]  
 FEED SIZE - MAX: 1/8" [3.2mm]; RECOMMENDED: MINUS 10 MESH [1.7 mm]  
 TYPICAL CONTINUOUS CONCENTRATE DISCHARGE - 1% - 50% OF FEED RATE (VARIABLE)  
 OPERATING "G" FORCE - VARIABLE (30 - 90g)  
 OPERATING SPEED - VARIABLE (257 - 445 RPM)  
 APPROX. WEIGHT OF CONCENTRATOR - 15,000 Lbs [6,800 Kgs.]  
 H.P. - 40 (ELECTRIC) [30 kW]  
 APPROX. SHIPPING DIMENSIONS - BASED ON DESTINATION (DISASSEMBLED IF CONTAINERIZED)



**NOTE:**

- SPECIFICATIONS SUBJECT TO CHANGE WITHOUT NOTICE.
- ALL PIPING TO CONCENTRATOR TO BE FLEXIBLE TO ALLOW FOR SLIGHT OSCILLATION OF UNIT DURING OPERATION.
- MACHINE SHOWN WITH AUTOMATED PIPING.