



KNELSON GRAVITY SOLUTIONS

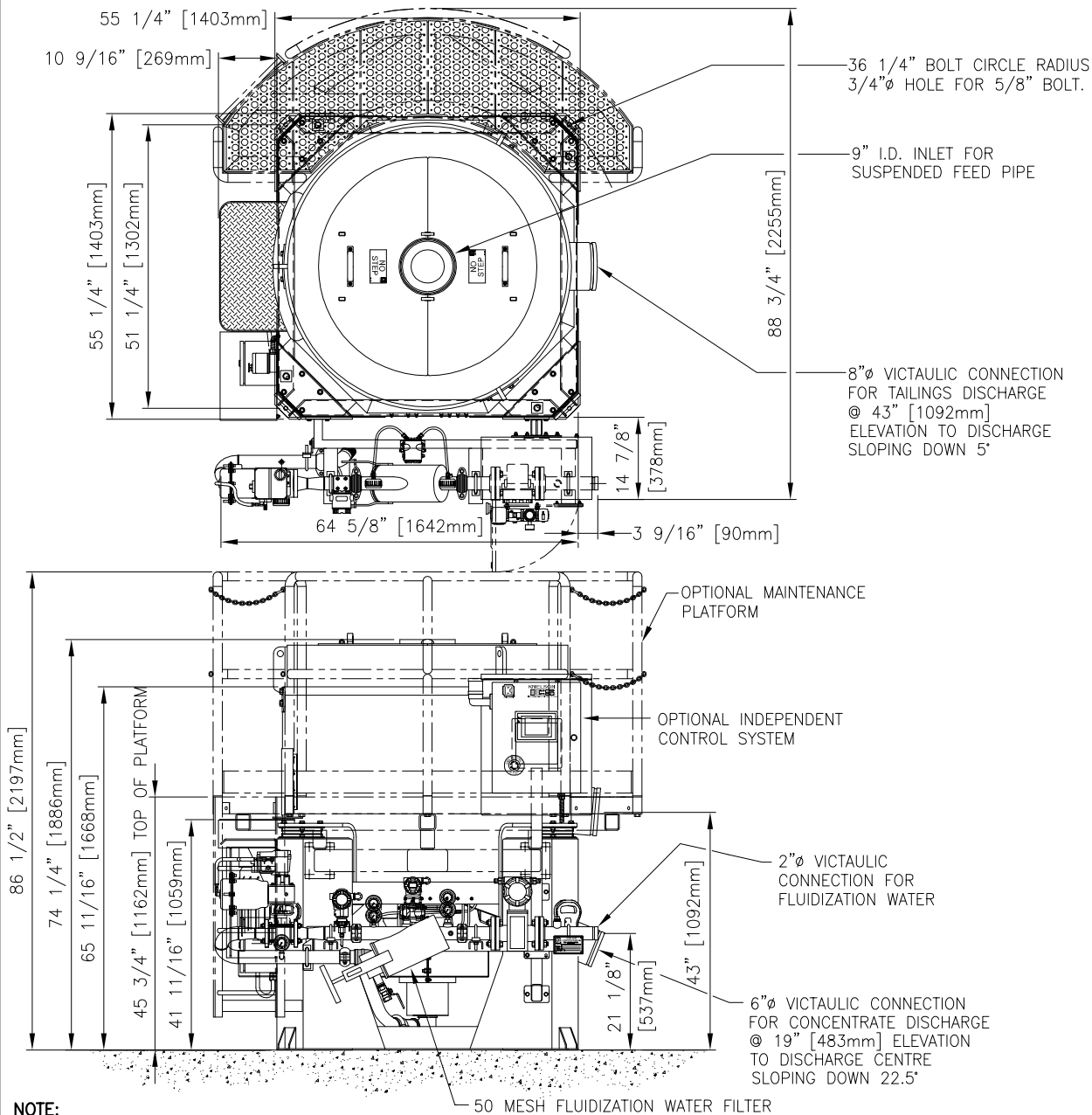
(A division of Knelson, a corporate partnership)
 19855-98 Avenue, Langley B.C. Canada, V1M 2X5
 Phone: (604)888-4015, Fax: (604)888-4013
 www.knelsongravitysolutions.com, e-Mail: knelson@knelson.com

DATE: JUL 16, 2009

DWG. No. A01393K3

KNELSON CONCENTRATOR MODEL KC-XD30 SPECIFICATION SHEET

- FEED CAPACITY (MAY VARY DEPENDING ON MATERIAL) - 83 - 165 tons/hr [75-150 tonnes/hr] SOLIDS
- TYPICAL FLUIDIZATION WATER REQUIREMENT - 75 - 110 USgpm [17 - 25 m³/hr]
- MINIMUM AIRFLOW REQUIRED (AUTO PIPING ONLY) - 3ft³/min (5.1m³/hr)
- FEED DENSITY - 0 - 75% SOLIDS/WEIGHT
- MAXIMUM TOTAL VOLUMETRIC THROUGHPUT - 900 USgpm [205 m³/hr]
- FEED SIZE - MAX: 1/4" [6mm]; RECOMMENDED: MINUS 10 MESH [1.7mm]
- TYPICAL CONCENTRATION CYCLE DURATION - HARD ROCK: 1/2 - 4 HOURS [PLACER: 4 - 12 HOURS]
- TYPICAL FLUSH CYCLE DURATION - 1 - 2 MINUTES
- CONCENTRATE VOLUME - SEE TABLE BELOW
- CONCENTRATE WEIGHT - SEE TABLE BELOW
- CONCENTRATOR NET WEIGHT - 3800 lbs [1724 kg] (NOT INCLUDING PIPING)
- H.P. - 15 (ELECTRIC) [11 kW]
- APPROXIMATE SHIPPING WEIGHT - 3940 lbs [1790 kg]
- APPROXIMATE SHIPPING WEIGHT WITH SPARES - 4230 lbs [1918 kg]
- APPROXIMATE CRATED SHIPPING DIMENSIONS - LENGTH 204cm x WIDTH 209cm x HEIGHT 204cm



NOTE:

- SPECIFICATIONS SUBJECT TO CHANGE WITHOUT NOTICE.
- ALL PIPING TO CONCENTRATOR TO BE FLEXIBLE TO ALLOW FOR SLIGHT OSCILLATION OF UNIT DURING OPERATION.
- MACHINE SHOWN WITH OPTIONAL AUTOMATED PIPING, MANUAL PIPING ALSO AVAILABLE