



KNELSON GRAVITY SOLUTIONS

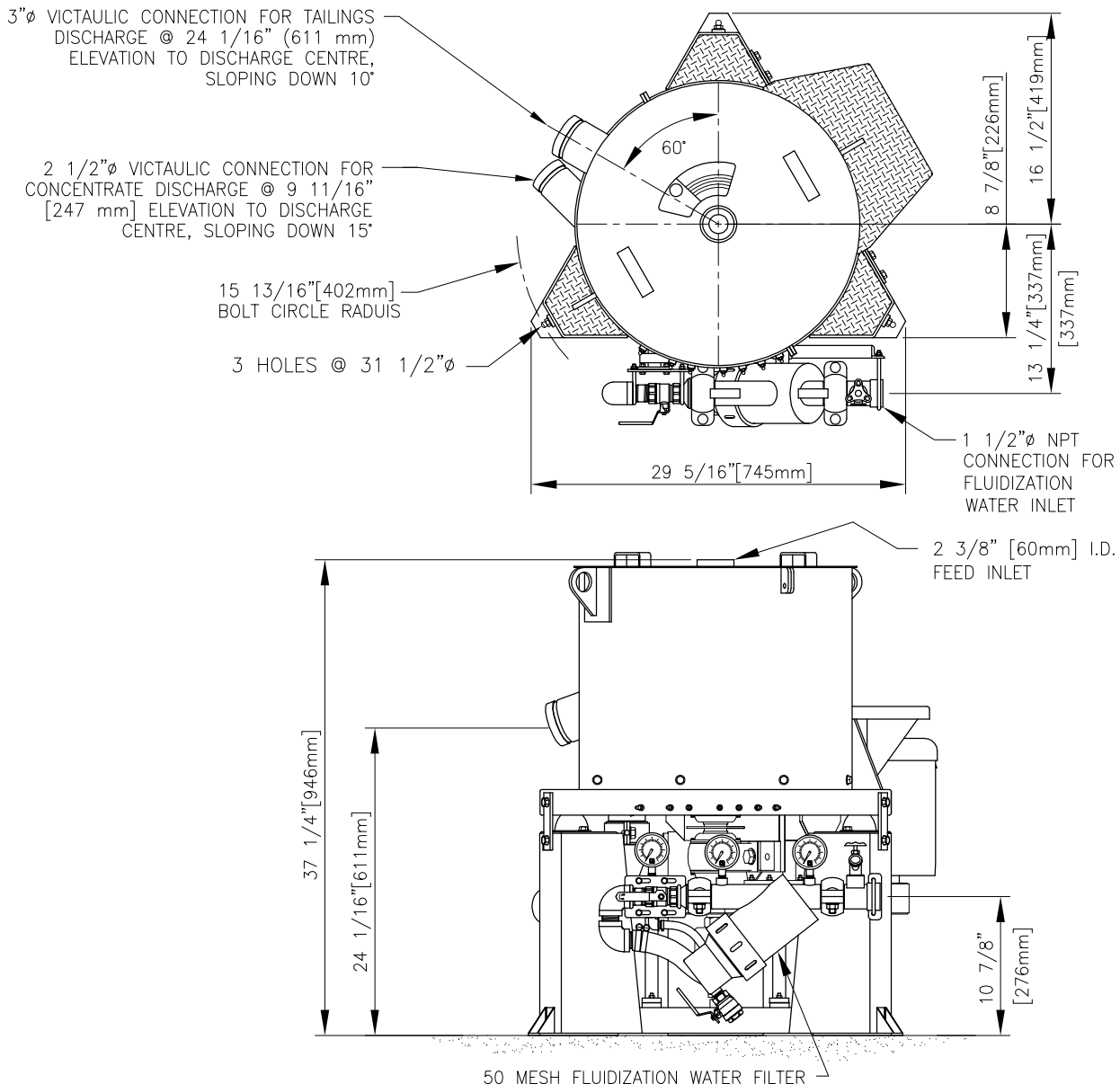
(A division of Knelson, a corporate partnership)
 19855-98 Avenue, Langley B.C. Canada, V1M 2X5
 Phone: (604)888-4015, Fax: (604)888-4013
 www.knelsongravitysolutions.com, e-Mail: knelson@knelson.com

DATE: SEPT 24, 2008

DWG. No. 96A781F1

KNELSON CONCENTRATOR MODEL KC-CD10[MS] SPECIFICATION SHEET

- FEED CAPACITY (MAY VARY DEPENDING ON MATERIAL) - 1 - 8.8 tons/hr [0.9 - 8 tonnes/hr] SOLIDS
 TYPICAL FLUIDIZATION WATER REQUIREMENT - 15 - 20 USgpm [3.4 - 4.5 m³/hr]
 MINIMUM AIRFLOW REQUIRED (AUTO. PIPING ONLY) - 3ft³/min (5.1m³/hr)
 FEED DENSITY - 0 - 75% SOLIDS/WEIGHT
 MAXIMUM TOTAL VOLUMETRIC THROUGHPUT - 50 USgpm [10m³/hr]
 FEED SIZE - MAX: 1/4" [6mm]; RECOMMEND: 10 MESH [1.7mm] MINUS
 TYPICAL CONCENTRATION CYCLE DURATION - HARD ROCK: 1/2 - 4 HOURS [PLACER: 4 - 12 HOURS]
 CONCENTRATE VOLUME - 72 in³ [1.2 L]
 CONCENTRATE WEIGHT - 4.5 - 8.5 lbs [2.0 - 3.8 Kg]
 CONCENTRATOR NET WEIGHT - 440 lbs [200 kg]
 H.P. - 1.5 (ELECTRIC)
- APPROXIMATE SHIPPING WEIGHT - 543 lbs [246 kg]
 APPROXIMATE CRATED SHIPPING DIMENSIONS - LENGTH 92cm x WIDTH 92cm x HEIGHT 97cm



NOTE:

- SPECIFICATIONS SUBJECT TO CHANGE WITHOUT NOTICE.
- ALL PIPING TO CONCENTRATOR TO BE FLEXIBLE TO ALLOW FOR SLIGHT OSCILLATION OF UNIT DURING OPERATION.
- MACHINE SHOWN WITH OPTIONAL MANUAL PIPING, AUTOMATED PIPING ALSO AVAILABLE.