



KNELSON GRAVITY SOLUTIONS

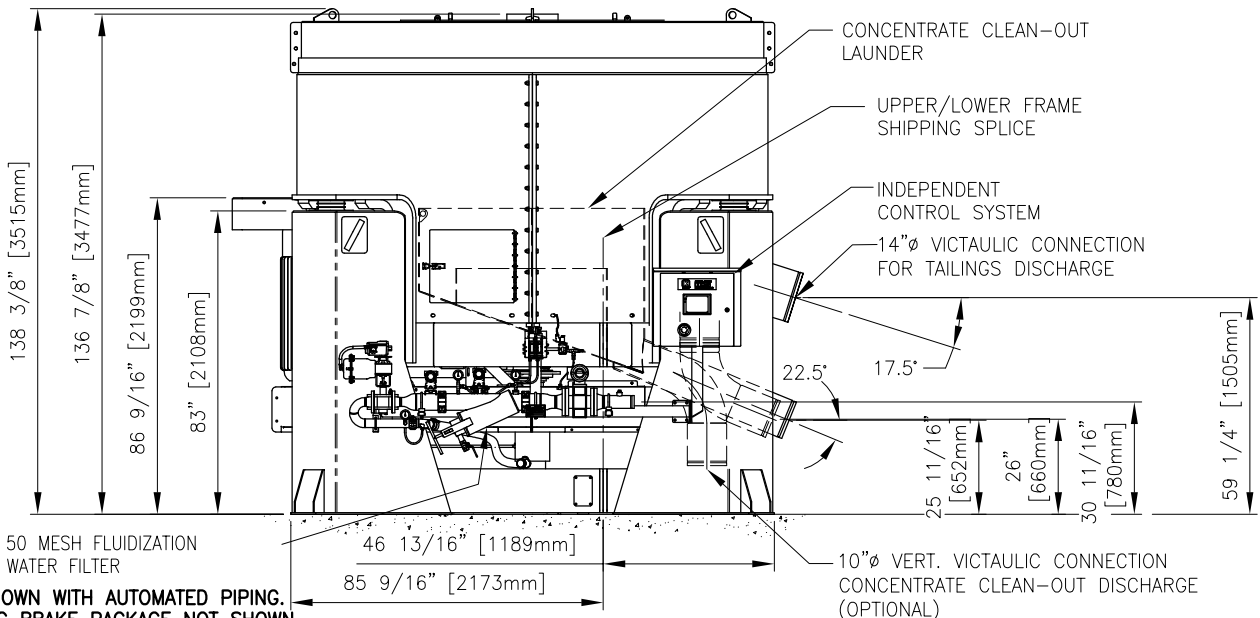
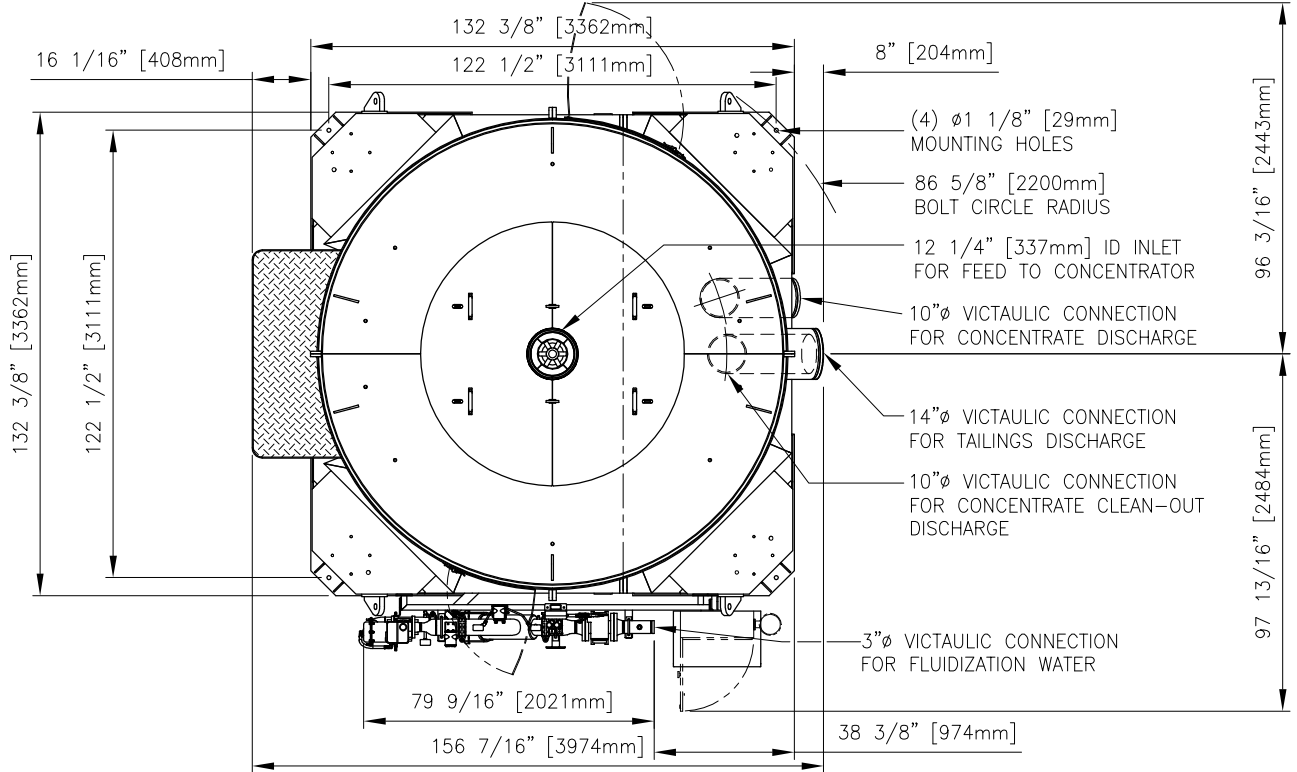
(A division of Knelson, a corporate partnership)
 19855-98 Avenue, Langley B.C. Canada, V1M 2X5
 Phone: (604)888-4015, Fax: (604)888-4013
 www.knelsongravitysolutions.com, e-Mail: knelson@knelson.com

DATE: SEPT 24, 2008

DWG. No. 04618A

KNELSON CONCENTRATOR MODEL KC-CVD64[MS] SPECIFICATION SHEET

- FEED CAPACITY (MAY VARY DEPENDING ON MATERIAL) - 110 - 330 tons/hr [100 - 300 tonne/hr] SOLIDS
 TYPICAL FLUIDIZATION WATER REQUIREMENT - 40 - 120 USgpm [9 - 27 m³/hr]
 MINIMUM AIRFLOW REQUIRED - 11.0ft³/min (18.7m³/hr)
 FEED DENSITY - 0 - 50% SOLIDS/WEIGHT
 MAX TOTAL VOLUMETRIC THROUGHPUT - 2800 USgpm [636 m³/hr]
 FEED SIZE - MAX: 1/8" [3.2mm]; RECOMMENDED: MINUS 10 MESH [1.7 mm]
 TYPICAL CONTINUOUS CONCENTRATE DISCHARGE - 1% - 50% OF FEED RATE (VARIABLE)
 OPERATING "G" FORCE - VARIABLE (30 - 90g)
 OPERATING SPEED - VARIABLE (182 - 315 RPM)
 APPROX. WEIGHT OF CONCENTRATOR - 40,000 Lbs [18,200 Kgs.]
 H.P. - 100-200 (ELECTRIC) [75-150 kW]
 APPROX. SHIPPING DIMENSIONS - BASED ON DESTINATION (DISASSEMBLED IF CONTAINERIZED)



NOTE:

- MACHINE SHOWN WITH AUTOMATED PIPING.
- VFD/DYNAMIC BRAKE PACKAGE NOT SHOWN.
- SPECIFICATIONS SUBJECT TO CHANGE WITHOUT NOTICE.
- ALL PIPING TO CONCENTRATOR TO BE FLEXIBLE TO ALLOW FOR SLIGHT OSCILLATION OF UNIT DURING OPERATION.