



# KNELSON GRAVITY SOLUTIONS

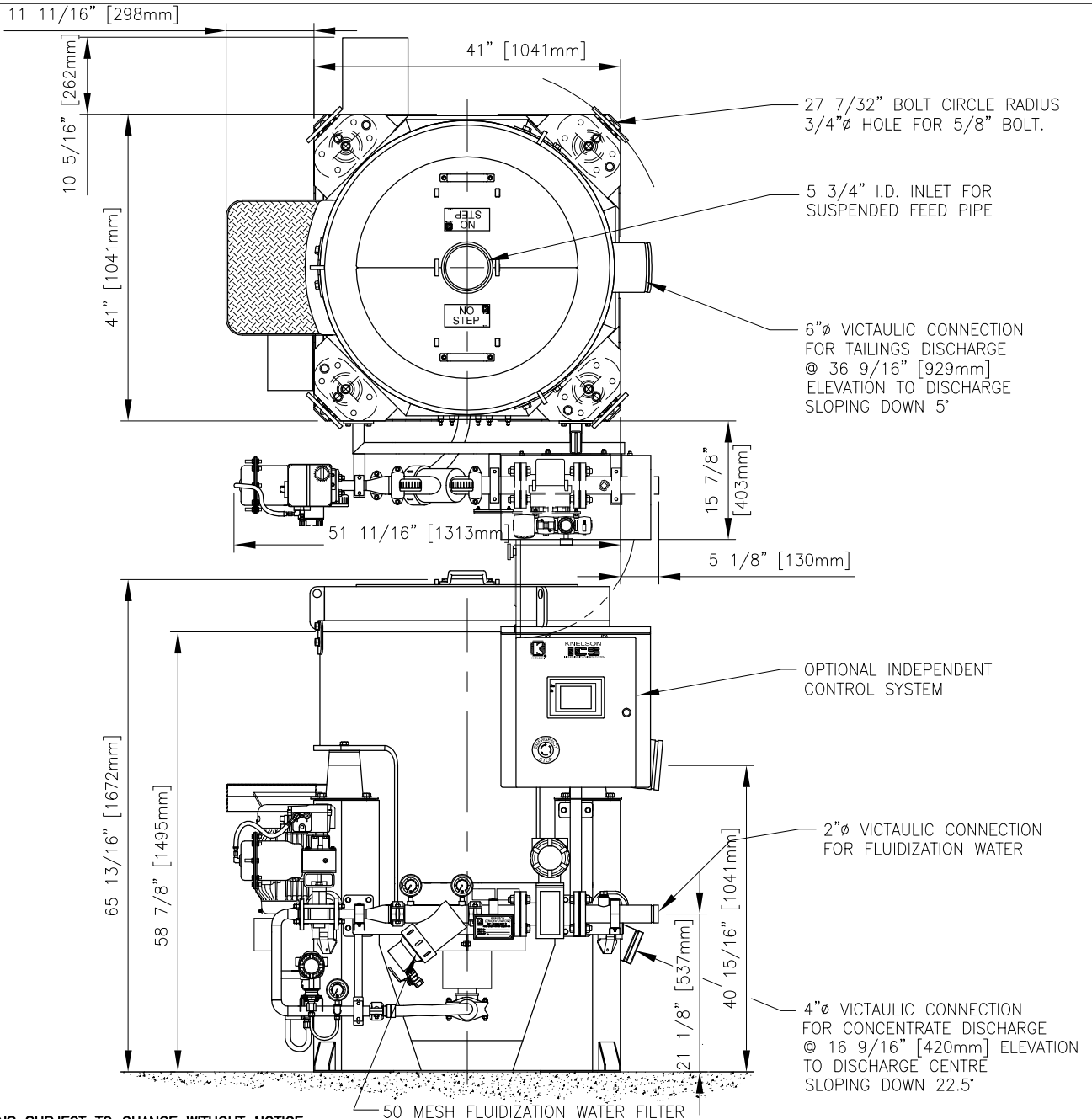
(A division of Knelson, a corporate partnership)  
 19855-98 Avenue, Langley B.C. Canada, V1M 2X5  
 Phone: (604)888-4015, Fax: (604)888-4013  
 www.knelsongravitysolutions.com, e-Mail: knelson@knelson.com

DATE: SEPT 24, 2008

DWG. No. 03355E1

## KNELSON CONCENTRATOR MODEL KC-XD20VG SPECIFICATION SHEET

FEED CAPACITY (MAY VARY DEPENDING ON MATERIAL)	- 17 - 88 tons/hr [15 - 80 tonnes/hr] SOLIDS
TYPICAL FLUIDIZATION WATER REQUIREMENT	- 35 - 60 USgpm [8 - 14 m <sup>3</sup> /hr]
MINIMUM AIRFLOW REQUIRED (AUTO PIPING ONLY)	- 3ft <sup>3</sup> /min (5.1m <sup>3</sup> /hr)
FEED DENSITY	- 0 - 75% SOLIDS/WEIGHT
MAXIMUM TOTAL VOLUMETRIC THROUGHPUT	- 480 USgpm [109 m <sup>3</sup> /hr]
FEED SIZE	- MAX: 1/4" [6mm]; RECOMMEND: 10 MESH [1.7mm] MINUS
TYPICAL CONCENTRATION CYCLE DURATION	- HARD ROCK: 1/2 - 4 HOURS [PLACER: 4 - 12 HOURS]
TYPICAL FLUSH CYCLE DURATION	- 1 - 2 MINUTES
CONCENTRATE VOLUME	- 305.4 in <sup>3</sup> [5.0 L]
CONCENTRATE WEIGHT	- 16 - 22 lbs [7 - 10 kg]
CONCENTRATOR NET WEIGHT	- 2400 lbs [1090 kg]
H.P.	- 7.5 - 10 (ELECTRIC) [5.5 - 7.5 kW]
APPROXIMATE SHIPPING WEIGHT	- 2700 lbs [1230 kg]
APPROXIMATE SHIPPING WEIGHT WITH SPARES	- 2900 lbs [1310 kg]
APPROXIMATE CRATED SHIPPING DIMENSIONS	- LENGTH 153cm x WIDTH 158cm x HEIGHT 171cm

**NOTE:**

- SPECIFICATIONS SUBJECT TO CHANGE WITHOUT NOTICE.
- ALL PIPING TO CONCENTRATOR TO BE FLEXIBLE TO ALLOW FOR SLIGHT OSCILLATION OF UNIT DURING OPERATION.
- MACHINE SHOWN WITH OPTIONAL AUTOMATED PIPING, MANUAL PIPING ALSO AVAILABLE