



KNELSON GRAVITY SOLUTIONS

(A division of Knelson, a corporate partnership)
 19855-98 Avenue, Langley B.C. Canada, V1M 2X5
 Phone: (604)888-4015, Fax: (604)888-4013
 www.knelsongravitysolutions.com, e-Mail: knelson@knelson.com

DATE: APRIL 20, 2011

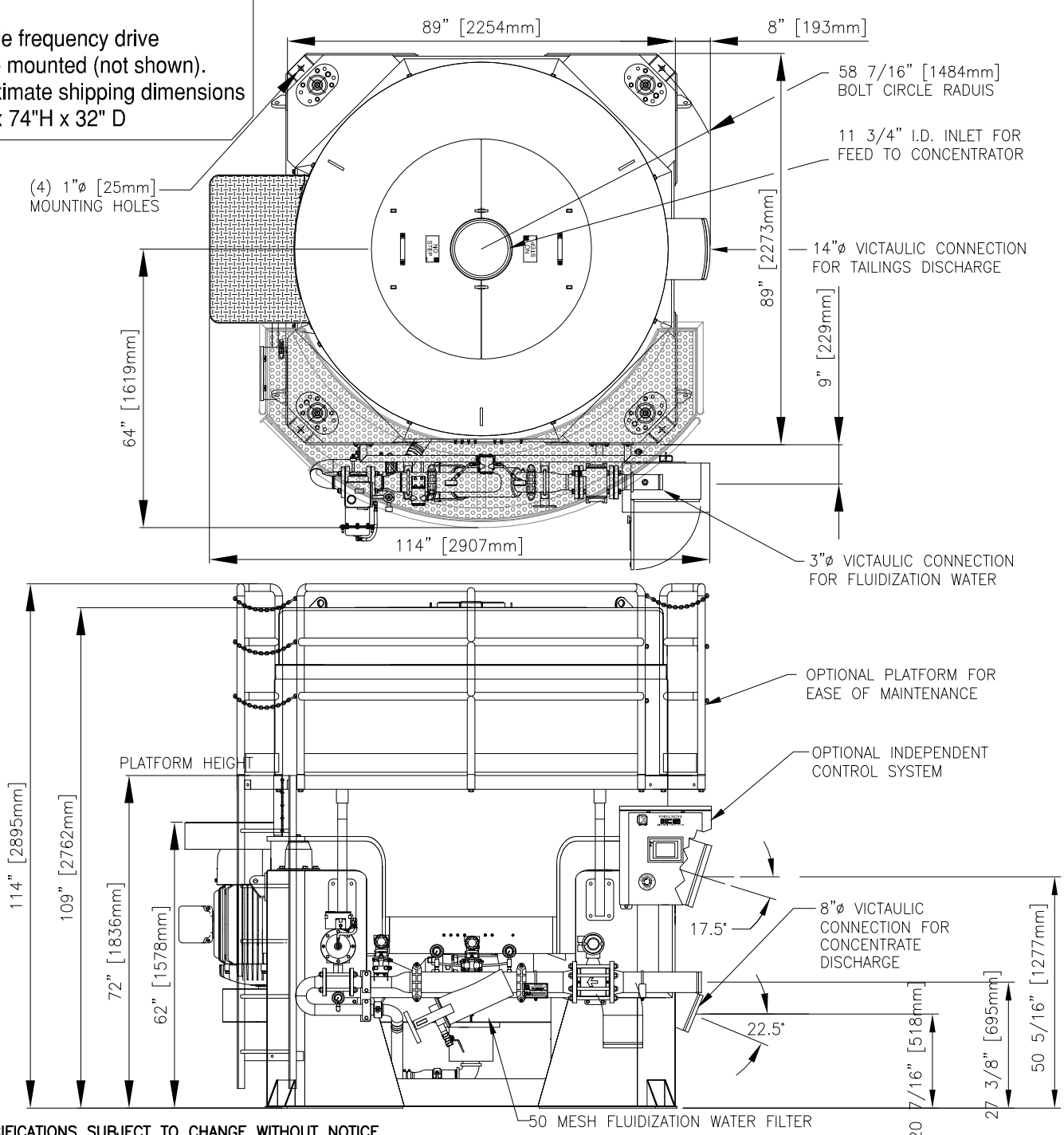
DWG. No. 03384E2

KNELSON CONCENTRATOR MODEL KC-XD48[MS]VG SPECIFICATION SHEET

- FEED CAPACITY (MAY VARY DEPENDING ON MATERIAL) - 220 - 440 tons/hr 200 - 400 tonnes/hr] SOLIDS
- TYPICAL FLUIDIZATION WATER REQUIREMENT - 180 - 270 USgpm [41 - 61 m³/hr]
- MINIMUM AIRFLOW REQUIRED (AUTO PIPING ONLY) - 3ft³/min (5.1m³/hr)
- FEED DENSITY - 0 - 75% SOLIDS/WEIGHT
- MAXIMUM TOTAL VOLUMETRIC THROUGHPUT - 2400 USgpm [545 m³/hr]
- FEED SIZE - MAX: 1/4" [6mm]; RECOMMENDED: MINUS 10 MESH [1.7 mm]
- TYPICAL CONCENTRATION CYCLE DURATION - HARD ROCK : 1/2 - 4 hrs [PLACER : 4 - 12 hrs]
- TYPICAL FLUSH CYCLE DURATION - 2 - 3 MINUTES
- APPROX. CONCENTRATE VOLUME / WEIGHT - 1220 in³ [20 L] / 100 - 110 Lbs [45 - 50 Kgs.]
- APPROX. WEIGHT OF CONCENTRATOR - 13,000 Lbs [5900 Kgs.]
- H.P. - 60 - 100 (ELECTRIC) [45 - 75 kW]
- APPROX. SHIPPING DIMENSIONS - BASED ON DESTINATION (DISASSEMBLED IF SHIPPED CONTAINERIZED)

NOTE:

Variable frequency drive
 remote mounted (not shown).
 Approximate shipping dimensions
 45"W x 74"H x 32" D



NOTE:

- SPECIFICATIONS SUBJECT TO CHANGE WITHOUT NOTICE.
- ALL PIPING TO CONCENTRATOR TO BE FLEXIBLE TO ALLOW FOR SLIGHT OSCILLATION OF UNIT DURING OPERATION.
- MACHINE SHOWN WITH OPTIONAL AUTOMATED PIPING, MANUAL PIPING ALSO AVAILABLE